



BSI Standards Publication

Child care articles — Compiled interpretations of CEN/TC 252 standards

National foreword

This Published Document is the UK implementation of CEN/TR 16411:2022. It supersedes PD CEN/TR 16411:2019, which is withdrawn.

The UK participation in its preparation was entrusted to Technical Committee CW/1, Safety of child use and child care products.

A list of organizations represented on this committee can be obtained on request to its committee manager.

Contractual and legal considerations

This publication has been prepared in good faith, however no representation, warranty, assurance or undertaking (express or implied) is or will be made, and no responsibility or liability is or will be accepted by BSI in relation to the adequacy, accuracy, completeness or reasonableness of this publication. All and any such responsibility and liability is expressly disclaimed to the full extent permitted by the law.

This publication is provided as is, and is to be used at the recipient's own risk.

The recipient is advised to consider seeking professional guidance with respect to its use of this publication.

This publication is not intended to constitute a contract. Users are responsible for its correct application.

This publication is not to be regarded as a British Standard.

© The British Standards Institution 2022
Published by BSI Standards Limited 2022

ISBN 978 0 539 19415 9

ICS 97.190

Compliance with a Published Document cannot confer immunity from legal obligations.

This Published Document was published under the authority of the Standards Policy and Strategy Committee on 31 July 2022.

Amendments/corrigenda issued since publication

Date	Text affected
------	---------------

TECHNICAL REPORT

CEN/TR 16411

RAPPORT TECHNIQUE

TECHNISCHER BERICHT

April 2022

ICS 97.190

Supersedes CEN/TR 16411:2019

English Version

Child care articles - Compiled interpretations of CEN/TC 252 standards

Articles de puériculture et compilation des
interprétations des normes du CEN/TC 252

Artikel für Säuglinge und Kleinkinder - Gesammelte
Interpretationen der CEN/TC 252-Normen

This Technical Report was approved by CEN on 21 February 2022. It has been drawn up by the Technical Committee CEN/TC 252.

CEN members are the national standards bodies of Austria, Belgium, Bulgaria, Croatia, Cyprus, Czech Republic, Denmark, Estonia, Finland, France, Germany, Greece, Hungary, Iceland, Ireland, Italy, Latvia, Lithuania, Luxembourg, Malta, Netherlands, Norway, Poland, Portugal, Republic of North Macedonia, Romania, Serbia, Slovakia, Slovenia, Spain, Sweden, Switzerland, Turkey and United Kingdom.



EUROPEAN COMMITTEE FOR STANDARDIZATION
COMITÉ EUROPÉEN DE NORMALISATION
EUROPÄISCHES KOMITEE FÜR NORMUNG

CEN-CENELEC Management Centre: Rue de la Science 23, B-1040 Brussels

Contents

Page

European foreword.....	4
Introduction	5
1 Scope	7
2 Normative References	8
3 Terms and definitions	8
4 00252033 – EN 1273:2005, <i>Child use and care articles — Baby walking frames — Safety requirements and test methods</i>	9
5 00252059 – EN 1888:2012, <i>Child care articles — Wheeled child conveyances — Safety requirements and test methods</i>	12
6 00252098 – EN 1888-1:2018, <i>Child care articles – Wheeled child conveyances – Part 1: Pushchairs and prams</i>	20
7 00252051 – EN 1930:2011, <i>Child use and care articles — Safety barriers — Safety requirements and test methods</i>	30
8 00252046 – EN 12586:2007, <i>Child use and care articles – Soother holder – Safety requirements and test methods</i>	50
9 00252048 – EN 12790:2009, <i>Child use and care articles — Reclined cradles</i>	70
10 00252049 – EN 12221-1:2008, <i>Changing units for domestic use — Part 1: Safety requirements</i>	75
11 00252050 – EN 12221-2:2008, <i>Changing units for domestic use — Part 2: Test methods</i>	78
12 00252054 – EN 1466:2004+A1:2007, <i>Child care articles — Carry cots and stands — Safety requirements and test methods</i>	79
13 00252032 – EN 14350-2:2004, <i>Child use and care articles — Drinking equipment — Part 2: Chemical requirements and tests</i>	82
14 00252089 – EN 1400:2013+A1:2014, <i>Child use and care articles – Soothers for babies and young children – Safety requirements and test methods</i>	84
15 00252122 – EN 1400:2013+A2:2018, <i>Child use and care articles - Soothers for babies and young children - Safety requirements and test methods</i>	107
16 00252024 – EN 14372:2004, <i>Child use and care articles — Cutlery and feeding utensils — Safety requirements and tests</i>	108
17 00252065 – EN 16120:2012, <i>Child use and care articles - Chair mounted seat</i>	111
18 00252108 – EN 16120:2012+A2:2016, <i>Child use and care articles - Chair mounted seat</i>	114
19 00252023 – EN 14350-1:2004, <i>Child use and care articles - Drinking equipment - Part 1: General and mechanical requirements and tests</i>	116
20 00252058 – EN 16232:2013, <i>Child use and care articles – Infant swings</i>	120

21	00252099 – EN 17022:2018, <i>Child care articles – Bathing aids – Safety requirements and test methods</i>	123
22	00252100 – EN 17072:2018, <i>Child care articles – Bath tubs, stands and non-standalone bathing aids – Safety requirements and test methods</i>	127
23	00252069 – EN 12586:2007+A1:2011, <i>Child care articles – Soother holder – Safety requirements and test methods</i>	134
24	00252114 – EN 14350:2020, <i>Child care articles — Drinking equipment — Safety requirements and test methods</i>	140
25	00252036 – EN 13209-1:2004, <i>Child use and care articles — Baby carriers - Safety requirements and test methods - Part 1: Framed back carriers</i>	147
26	00252071 – EN 13209-1:2021, <i>Child care articles — Child carriers - Safety requirements and test methods - Part 1: Framed back carrier</i>	149
	Annex A (informative) Interpretation 3 on 3.9 and 5.1.4.2 in EN 12586:2007, <i>Child use and care articles — Soother holder — Safety requirements and test methods</i> (WI 00252046).....	151
	Annex B (informative) Reply to interpretation 3 on 3.9 and 5.1.4.2 in EN 12586:2007, <i>Child use and care articles — Soother holder — Safety requirements and test methods</i> (WI 00252046).....	154
	Annex C (informative) Reply to interpretation 1 on 5.1.10 in EN 12586:2007 <i>Child use and care articles — Soother holder — Safety requirements and test methods</i> (WI 00252046)	156
	Bibliography	162

European foreword

This document (CEN/TR 16411:2022) has been prepared by Technical Committee CEN/TC 252 “Child care articles”, the secretariat of which is held by AFNOR.

Attention is drawn to the possibility that some of the elements of this document may be the subject of patent rights. CEN shall not be held responsible for identifying any or all such patent rights.

This document supersedes CEN/TR 16411:2019.

Any feedback and questions on this document should be directed to the users’ national standards body. A complete listing of these bodies can be found on the CEN website.

Introduction

This Technical Report contains replies to requests for interpretation and clarifications with regard to the understanding of clauses in the standards elaborated within the CEN/TC 252. The replies concern those requests which have resulted in an interpretation or the decision that no action is necessary.

An interpretation does not have the same status as the text of the standard, nor can it overrule the text of the standard. However, following an interpretation should give assurance that the relevant clause of the standard has been correctly applied. An interpretation will only be regarded as a clarification of the meaning of the standard.

a) Disclaimer:

The interpretations and clarifications have been derived by expert groups of CEN/TC 252. The information contained herein is for guidance only and does not reflect the formal approval by CEN or CEN member bodies. It should be noted that the interpretations are neither part of any standard nor have been referenced in the Official Journal of the European Union.

b) Requests for interpretation:

Requests for interpretations may be submitted by a CEN member body through its national committee or by a CEN/TC 252 liaison (but not directly by an individual or a company) – in accordance with the interpretation protocols agreed by CEN/TC 252. The requests are then channelled to the relevant CEN/TC 252 working group which will deal with the request.

A request for an interpretation may lead to:

1) an interpretation of the standard:

this should reflect a reasonable interpretation of how the standard should be used, while taking into account:

- i) the wording of the standard;
- ii) the rationale of the standard;
- iii) the history of the standard;

2) a no-action decision:

this is applicable when it is agreed that the standard appropriately specifies how a child care article should be assessed;

3) a proposal for an amendment of the standard:

this is applicable when it is agreed that the standard is deficient in some way.

NOTE Interpretations are published in CEN/TR 16411, which will be updated on a regular basis.

Proposals for amendments will be progressed as new work item proposals in accordance with CEN rules.

c) Answers to requests for interpretations:

Since requests for interpretations are submitted through a CEN member body, it is assumed that the member body will keep itself informed about decisions concerning the request and its progress and will itself inform the originator of the request as appropriate.

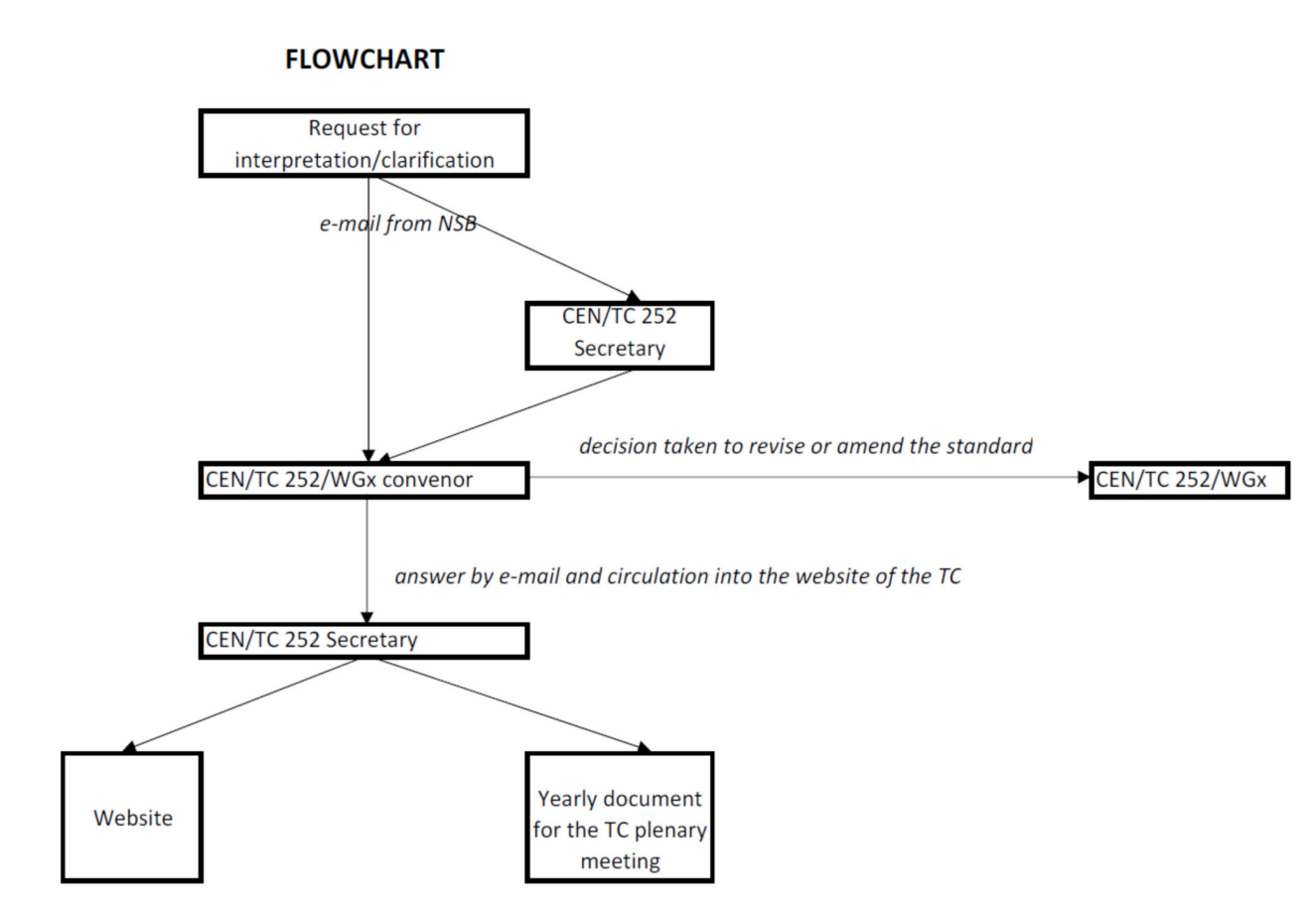


Figure 1

1 Scope

The purpose of this document is to provide replies to requests for interpretations and clarifications of:

- EN 1273:2005, *Child use and care articles — Baby walking frames — Safety requirements and test methods*;
- EN 1888:2012, *Child care articles — Wheeled child conveyances — Safety requirements and test methods*;
- EN 1888-1:2018, *Child care articles - Wheeled child conveyances - Part 1: Pushchairs and prams*;
- EN 1930:2011, *Child use and care articles — Safety barriers — Safety requirements and test methods*;
- EN 12586:2007, *Child use and care articles — Soother holder — Safety requirements and test methods*;
- EN 12790:2009, *Child use and care articles — Reclined cradles*;
- EN 12221-1:2008, *Changing units for domestic use — Part 1: Safety requirements*;
- EN 12221-2:2008, *Changing units for domestic use — Part 2: Test methods*;
- EN 1466:2004+A1:2007, *Child care articles — Carry cots and stands — Safety requirements and test methods*;
- EN 14350-2:2004, *Child use and care articles — Drinking equipment — Part 2: Chemical requirements and tests*;
- EN 1400:2013+A1:2014, *Child use and care articles — Soothers for babies and young children*;
- EN 14372:2004, *Child use and care articles — Cutlery and feeding utensils — Safety requirements and tests*;
- EN 16120:2012, *Child use and care articles — Chair mounted seat*;
- EN 16120:2012+A2:2016, *Child use and care articles — Chair mounted seat*;
- EN 14350-1:2004, *Child use and care articles — Drinking equipment - Part 1: General and mechanical requirements and tests*;
- EN 16232:2013, *Child use and care articles — Infant swings*;
- EN 17022:2018, *Child care articles - Bathing aids - Safety requirements and test methods*;
- EN 17072:2018, *Child care articles - Bath tubs, stands and non-standalone bathing aids - Safety requirements and test methods*;
- EN 12586:2007+A1:2011, *Child care articles - Soother holder - Safety requirements and test methods*;
- EN 14350:2020, *Child care articles – Drinking equipment - Safety requirements and test methods*;

- EN 13209-1:2004, *Child use and care articles - Baby carriers - Safety requirements and test methods - Part 1: Framed back carriers*;
- EN 13209-1:2021, *Child care articles - Child carriers - Safety requirements and test methods - Part 1: Framed back carrier*.

2 Normative References

There are no normative references in this document.

3 Terms and definitions

No terms and definitions are listed in this document.