

DOMESTIC GAS RANGES

Effective Date — May 1980

This Standard is a revised and combined edition
of the former

CGA 1.1-1976
and
CGA 1.2-1976

Prepared by
Canadian Gas Association



Approved by
Standards Council of Canada



Published November 1981
Copyright © Canadian Gas Association — 1981

THE STANDARDS COUNCIL OF CANADA

The Standards Council of Canada is the co-ordinating body of the National Standards System, a federation of independent, autonomous organizations working towards the further development and improvement of voluntary standardization in the national interest.

The principal objects of the Council are to foster and promote voluntary standardization as a means of advancing the national economy, benefitting the health, safety and welfare of the public, assisting and protecting the consumer, facilitating domestic and international trade, and furthering international co-operation in the field of standards.

A National Standard of Canada is a standard which has been approved by the Standards Council of Canada and one which reflects a reasonable agreement among the views of a number of capable individuals whose collective interests provide, to the greatest practicable extent, a balance of representation of producers, users,

consumers and others with relevant interests, as may be appropriate to the subject in hand. It normally is a standard which is capable of making a significant and timely contribution to the national interest.

Approval of a Standard as a National Standard of Canada indicates that a standard conforms to the criteria and procedures established by the Standards Council of Canada. Approval does not refer to the technical content of the standard; this remains the continuing responsibility of the accredited standards-writing organization.

Those who have a need to apply standards are encouraged to use National Standards of Canada whenever practicable. These standards are subject to periodic review; therefore, users are cautioned to obtain the latest edition from the organization preparing the standard.

The responsibility for approving National Standards of Canada rests with the

**Standards Council of Canada
45 O'Connor Street, Suite 1200,
OTTAWA, Ontario. CANADA
K1P 6N7**

THE CANADIAN GAS ASSOCIATION

The Canadian Gas Association, which represents all segments of the natural gas industry, has been accredited by the Standards Council of Canada to prepare National Standards of Canada in the area of equipment for use with natural gas and propane.

CGA, founded in 1907, represents distributors, transmission companies, producers, pipeline contractors, manufacturers, and allied service organizations. CGA set up a standards writing, inspection, and certification programme in the mid-1950s at a time when natural gas service was being extended to Eastern Canada and the West Coast. The standards programme now embraces more than 90 standards for gas appliances and accessories.

Committees that write the standards include representation from all interests and are so constituted that no one interest may dominate. The interests represented include consumers, manufacturers, utilities, governmental inspection authorities, and certification organizations. Standards are prepared using the consensus principle with effort applied to reconcile differing opinions. Government inspection authorities having jurisdiction also ballot on the standards as members of the Interprovincial Gas Advisory Council (IGAC).

The CGA Standards Advisory Committee (SAC) reviews committee structures and procedures to determine that a standard meets the criteria of the Standards Council of Canada.

This Standard has been accepted by the Standards Committee, IGAC and SAC.

This Standard is intended to be used within the scope of the standard by the manufacturing sector, by those applying the equipment, or those responsible for its proper application. It is the responsibility of the user to determine in each case that the Standard is suitable for the specific application. The Standards Committee and IGAC normally stipulate an effective date for the Standard, delayed sufficiently to permit suppliers to make adjustments.

CGA Approvals, incorporated 1993, operates a certification programme for fuel-fired products which is accepted by all Canadian inspection authorities and accredited by the Standards Council of Canada. In addition, through the Canadian Gas Research Institute (CGRI), the gas industry is pursuing the improvement of equipment and the development of new products. Data from these projects is available to Standards Committees for review and consideration.

Recommendations for new standards and revisions to existing standards may come from any source. These suggestions should be addressed to the Standards Department of CGA Approvals, Inc.

**Published by:
CGA Approvals, Inc.
55 Scarsdale Road,
DON MILLS (Toronto), Ontario, CANADA.
M3B 2R3**

**LES NORMES NATIONALES DU CANADA SONT DISPONIBLES EN
VERSIONS FRANCAISE ET ANGLAISE**

PRINTED IN CANADA

[This is a preview. Click here to purchase the full publication.](#)

AMENDMENT #1
to
CAN1-1.1-M81
DOMESTIC GAS RANGES

Amendment #1 contains amended or new pages to National Standard of Canada CAN1-1.1-M81 DOMESTIC GAS RANGES. This Standard was originally published in November 1981 and was a revised and combined edition of the former CGA 1.1-1976 and CGA 1.2-1976. The pages of this amendment are dated as follows:

Page	Dated
i (amended)	November 1984
iv (new)	November 1984
16 (amended)	November 1984
17 (amended)	November 1984
38 (amended)	November 1984
41 (amended)	November 1984

*Note: New or amended clauses are identified by a vertical line in the margin.
Amendment #1 involves only minor changes for clarification purposes and the effective date is immediate.*

These pages are to be inserted into your copy of the Standard.



Prepared by

Canadian Gas Association
55 Scarsdale Road
Don Mills, Ontario
M3B 2R3

TABLE OF CONTENTS

Interprovincial Gas Advisory Council Members	ii
Standards Committee Members	iii
Amendment #1	iv
PART I CONSTRUCTION	
1.1 Scope	1
1.2 General Construction and Assembly	1
1.3 Appliance Structure	2
1.4 Gas Supply Lines	5
1.5 Manual Gas Valves	6
1.6 Gas Appliance Pressure Regulators	7
1.7 Automatic Valves	7
1.8 Thermostats	7
1.9 Orifice and Orifice Fittings	7
1.10 Burners	8
1.11 Lighters	9
1.12 Pilot Burners, Safety Shut-Off Devices and Pilot Igniters	9
1.13 Pilot Gas Filters	10
1.14 Cooking Tops, Top Covers and Grates	10
1.15 Drip Trays	10
1.16 Oven and Broiler Linings and Oven Bottoms	11
1.17 Oven Racks, Rack Supports and Broiler Pans	11
1.18 Thermal Insulation	12
1.19 Venting and Combustion Air Supply	12
1.20 Flue Collars	12
1.21 Flue Deflectors	12
1.22 Electrical Equipment and Wiring	13
1.23 Instructions	13
1.24 Marking	13
PART II PERFORMANCE	
2.1 General	16
2.2 Test Gases	18
2.3 Test Pressures and Burner Adjustments	18
2.4 Burner and Pilot Capacities	18
2.5 Combustion	18
2.6 Burner and Pilot Operating Characteristics	20
2.7 Automatic Ignition	23
2.8 Pilot Burners and Safety Shut-Off Devices	25
2.9 Manual Gas Valves	27
2.10 Gas Appliance Pressure Regulators	27
2.11 Automatic Valves	28
2.12 Thermostats	28
2.13 Top Burner Thermal Efficiency	31
2.14 Oven Heating Capacity	31
2.15 Oven Heat Distribution	31
2.16 Broiler Temperature	32
2.17 Broiler Heat Distribution	33
2.18 Broiler Performance	33
2.19 Surface and Handle Temperatures	34
2.20 Wall, Floor and Enclosure Temperatures	36
2.21 Flue Gas Temperatures	43
2.22 Draft Hoods	43
PART III DEFINITIONS	45
APPENDIX A Classification of Markings	47
APPENDIX B Marking Material Adhesion	48
APPENDIX C SI (Metric) Symbols	49

NOTE

This Standard contains SI (Metric) equivalents to the yard/pound quantities, the purpose being to allow the Standard to be used in SI (Metric) units. Some sectors of industry in the future may select different SI (Metric) values where this Standard shows only equivalents.

If a value for a measurement as given in this Standard is followed by an equivalent value in other units, the first stated is to be regarded as the requirement. The given equivalent may be approximate. If a value for a measurement and an equivalent value in other units are both specified as a quoted marking requirement, either, or both, shall be provided.

Acknowledgement is made for the French translation of this National Standard of Canada by the Translation Bureau of the Department of the Secretary of State and the technical editing of the translation by the Supply Information and Data Management Branch of the Department of Supply & Services.

This is a preview. Click here to purchase the full publication.

shall have the surface upon which the finish material is to be superimposed stenciled with a statement indicating that only material which the manufacturer intends should be applied.

1.24.13 When a built-in range is provided with a flue collar, it shall be provided with a Class IV marking in a location conspicuous prior to installation, clearly indicating the specific type of Type B gas vent (such as B-0, B-1, B-1 ½, etc) with which the appliance is to be used. Stenciling this marking directly on the appliance is considered acceptable.

The manufacturer's instructions shall also state the specific type of Type B gas vent to be used, together with the listed clearances from combustible material.

1.24.14 A built-in oven with provisions for front discharge of flue products shall bear a Class IV marking, stating:

"Do not install beneath work counters."

1.24.15 When a gas appliance pressure regulator is supplied separately with a built-in top, griddle or open-top broiler unit, or combination top or elevated oven and broiler unit, the following marking shall be provided:

- a. A marking on the name plate(s) stating, "For use with a gas pressure regulator," and
- b. A Class VI marking in an obvious location stating: "The regulator supplied must be used with this range."

1.24.16 The following shall also appear on the name plate(s) of a built-in unit

- a. "Vented Range", or
- b. "Unvented Range", or
- c. "Either a Vented or Unvented Range".

1.24.17 Built-in broiler units, with the exception of combination oven and broiler units, for installation in other than non-combustible locations, shall bear a Class IIIA marking as follows:

- a. "Minimum horizontal distance(s) from center of grid area to adjacent vertical combustible walls extending above the top panel ____ inches from side walls, ____ inches from rear wall."
- b. "Minimum vertical distance from top of broiler grid to over-head unprotected combustible surfaces 36 inches (915 mm)."

1.24.18 Built-in top units shall bear a Class IIIA marking as follows:

"Minimum horizontal distance(s) from center of burner head(s) to adjacent vertical combustible walls extending above the top panel, ____ inches from side walls, ____ inches from rear wall."

For two-burner top units, the minimum acceptable spacing between the center of burner heads of adjacent top units shall also be specified.

1.24.19 Also see 1.5.5 and 1.8.5.

PART II PERFORMANCE

2.1 GENERAL

2.1.1 This Standard covers domestic gas ranges

- a. for use with natural gas,
- b. for use with propane,
- c. for installation in mobile housing or recreational vehicles for use with propane (see 2.1.11),
- d. for installation in mobile housing or recreational vehicles for use with natural gas and convertible for use with natural gas or propane when provision is made for the simple conversion from one gas to another (see 2.1.11).

2.1.2 An appliance submitted for examination under this Standard shall be tested with the type(s) of gas selected by the manufacturer.

2.1.3 An appliance submitted for examination under this Standard shall be accompanied by a separate spare broiler or oven door equipped with a window permitting visual observation of pilot and main burner operation.

2.1.4 Unless otherwise specified herein, an appliance tested for compliance with this Standard shall not be connected to a flue pipe but shall depend for venting of the flue gases solely on the provisions incorporated within it.

2.1.5 Unless otherwise specified herein, a free standing unit for installation with zero clearance shall be tested for compliance with this Standard with the back and sides of the appliance placed against suitable test walls (as near as appliance construction will permit) and with the base of the appliance sealed to the floor for a vertical distance of 0.5 inch (12.7 mm) at the front and sides but not at the rear. Leg levelers, when provided, shall be removed.

2.1.6 During all tests for compliance with this Standard, each built-in top unit, open top broiler or enclosed broiler unit intended to be installed in a counter-height cabinet shall be installed in a base cabinet of an enclosure also comprising back and side walls and simulated wall-hung cabinetry as shown in Figure 4. Two-burner top units shall be tested in pairs with spacing between the units as specified by the manufacturer. The back and side walls of the cabinet shall be constructed of studding covered on both sides with nominal 1 inch thick wooden boards. All surfaces facing the appliance shall be finished in dull black. The base cabinet shall be provided with tight-fitting doors. These doors shall remain closed during all tests except as otherwise specified herein. Openings shall be provided in the cabinet only for those flues and combustion air supply ducts designed to extend to the cabinet exterior that are integral parts of the appliance. All joints of the cabinet shall be sealed.

Vertical walls, constructed of studding covered on both sides with nominal 1 inch thick wooden boards shall extend upward 3 ft (915 mm) from the top of the cabinet as shown in Figure 4 and shall be finished in dull black. The walls shall be placed at the horizontal distances from the centers of the burner heads as specified by the manufacturer and marked on the name plate. These walls shall be in place for all tests except those specified in 2.13 during which the side walls shall not be in place.

2.1.7 During all tests for compliance with this Standard, each built-in oven unit, enclosed broiler unit, or combination oven and broiler unit shall be installed in an enclosure constructed in accordance with Figure 5. The back, side and front walls of this enclosure shall be constructed of studding covered on both sides with nominal 1 inch thick wooden boards. The back and side walls extend 1 ft (305 mm) above the appliance and shall be dimensioned so that their interior faces will be in contact with the rear and side surfaces of the appliance. The front wall shall extend from the floor to the bottom of the appliance and from the top of the appliance to a height of 1 ft (305 mm) above the appliance.

The bottom and top of the appliance shall be covered with nominal 1 inch thick wooden boards. All surfaces facing the appliance shall be finished in dull black. The enclosure shall be provided with a floor and a ceiling constructed of 1 inch thick (25.4 mm) wooden boards. All joints shall be sealed.

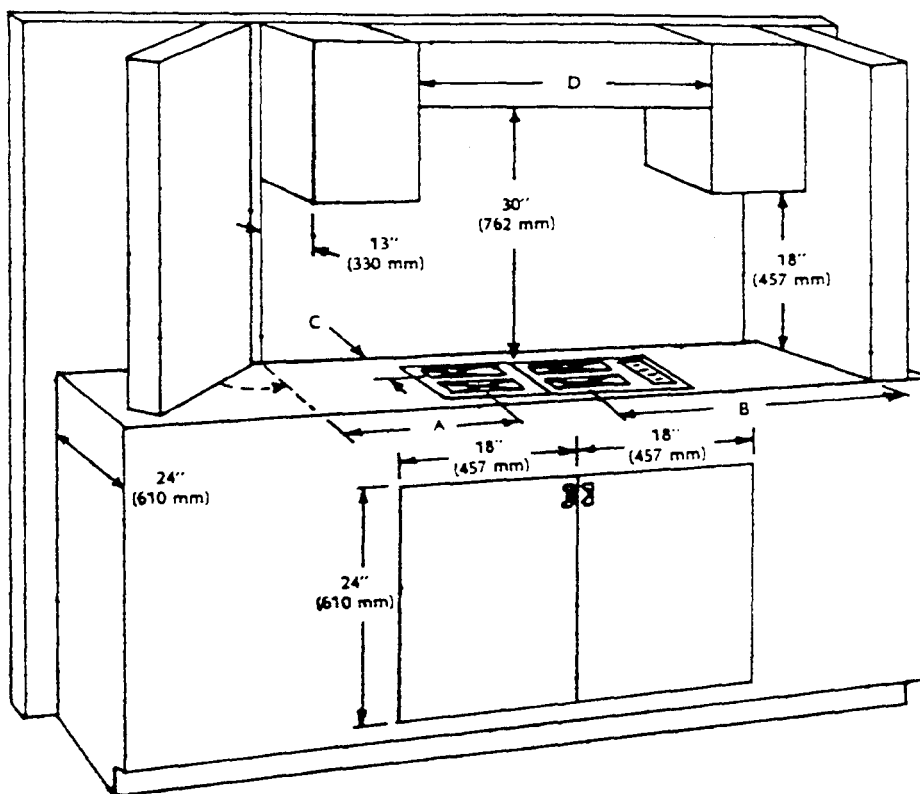
2.1.8 If a built-in unit is designed to have an exterior surface applied using materials supplied by the installer, the appliance shall be tested with the exterior surface applied according to the manufacturer's installation instructions.

2.1.9 A room heater incorporated in a free standing unit shall comply with the performance provisions of the current Standard CAN1-2.1 GAS-FIRED VENTED ROOM HEATERS.

2.1.10 When a room heater is incorporated in a free standing unit, the room heater burner(s) shall be adjusted as specified in 2.3.3 and the room heater shall be operated whenever operation of the oven burner is specified, during conduct of tests specified in 2.5, 2.6.6, 2.6.7, 2.6.8, 2.6.12, 2.7.2, 2.9.2, 2.12.3, 2.20 and 2.22.

2.1.11 Special performance provisions applicable to appliances for installation in mobile housing or recreational vehicles are outlined under 2.1.1(c) and (d) and 2.2(b) and (c).

2.1.12 Tests specified under 2.6, 2.7, 2.8, 2.12.6 and 2.12.7 shall be conducted at the pilot location tolerances specified by the manufacturer.



Dimensions "A", "B", and "C" to be specified by manufacturer and are from centreline of burner head to side and backwall.
Dimension "D" to be specified by manufacturer and is not less than nominal width of appliance.

Figure 4
Test Structure for Built in Top Units and Open Top Broiler Units

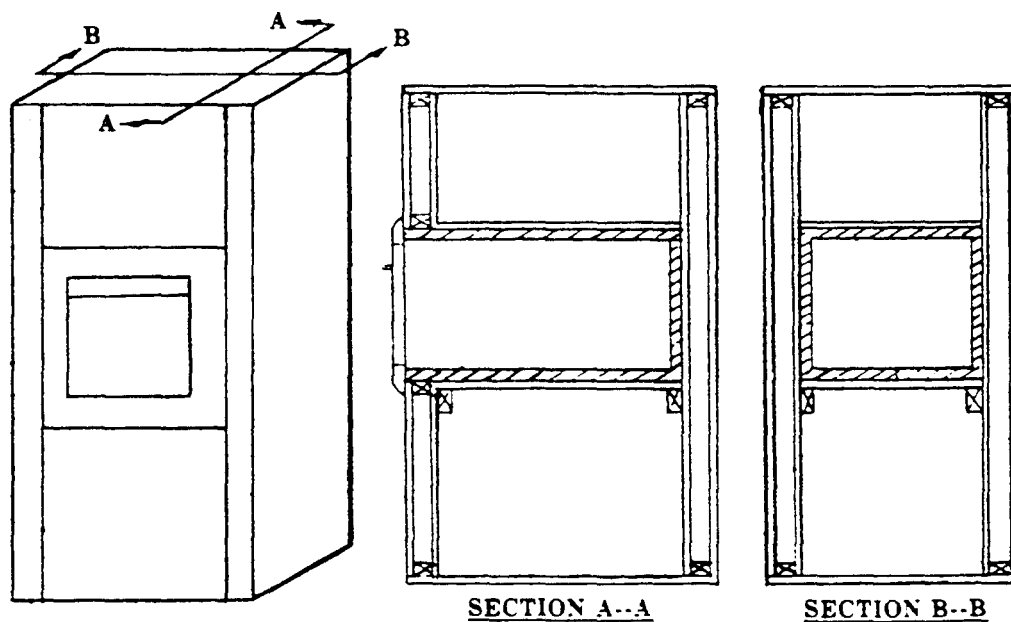


Figure 5
Test Enclosure for Testing Built-In Oven and Broiler Units

*Replaces page 17 dated November 1981
Copyright © Canadian Gas Association 1984

This is a preview. Click here to purchase the full publication.